

# Thule Group

DOCUMENT TITLE	DOCUMENT #:	REVISION	RELEASED
Upper Bracket left and Right Lite Double trailer and Single		1	10/20/2016

**Background:** Replacing the Upper Bracket left and Right for the lite single and double trailer

## Required

**Service part # 40105346 left or 40105347 Right**

**#4 allen key**

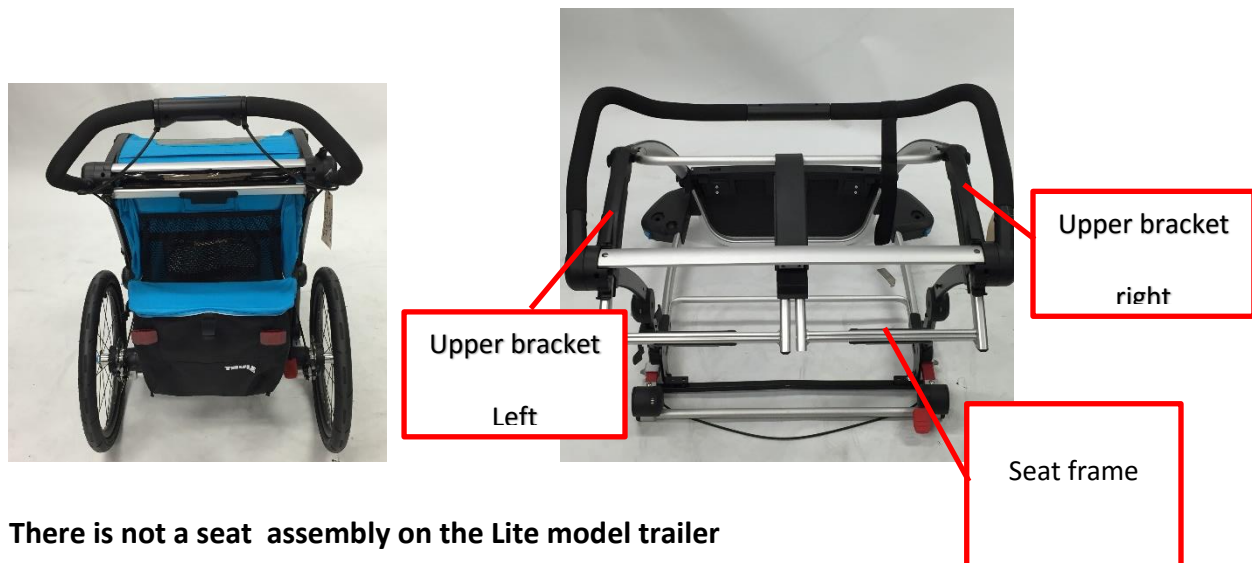
**Flat screwdriver**

**Phillips screwdriver**

**Determine which side you need to replace by standing behind the trailer**

**L**

**R**



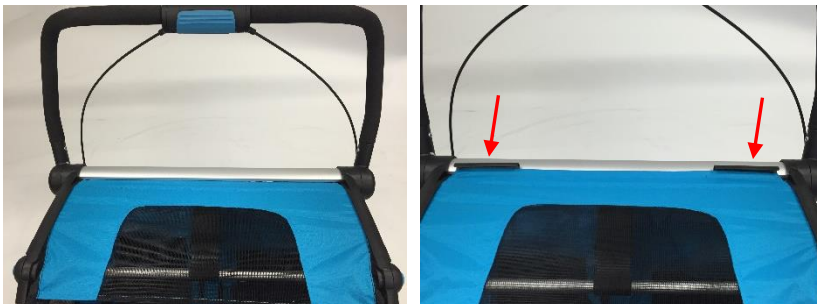
**There is not a seat assembly on the Lite model trailer**

## Removing The ACB Bracket

**Remove the top portion of the cover first**

- 1) Remove cover from the ACB

Reach underneath and locate the tabs that lock the cover into place



- 2) Start sliding the top of the cover forward, alternating from outside to another.  
Removing the top from the frame



### ACB Brackets (same on all trailers)

- 1) Locate the ACB brackets



- 2) Remove the 4 bolts that hold the Bracket on to the trailer  
Two on the side and two on top



The Brackets are side specific compare them to the one you removed

## Removal of the ACB

A) On either side of the trailers Accessory Cross Bar (ACB) you will find two covers. Remove the 2 screws, slide the cap to the side and remove. Repeat on the other side.



B) Remove the screw located in the (ACB)



# Thule Group»

DOCUMENT TITLE

DOCUMENT #:

REVISION

RELEASED

Upper Bracket left and Right Lite Double trailer and  
Single

1

10/20/2016

C) Move the handle bar forward

Partially collapse the trailer pul back on the ACB and rotate it away from the trailer



D) Slide the Acb to the left

Holding onto the body and slide the ACb from the trailer

**On a single trailer model and Lite it is the same but with out the center rail**



**Undo the screw that attaches the body to the upper bracket**

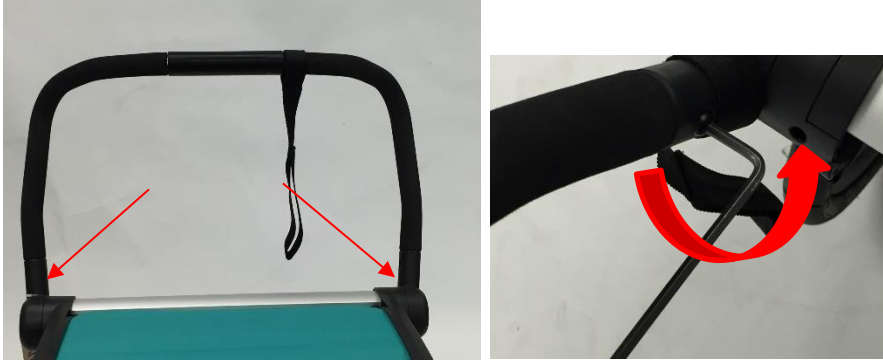


- 1) Partially collapse the trailer and slide the upper part of the body forward and out of the bracket you are replacing**

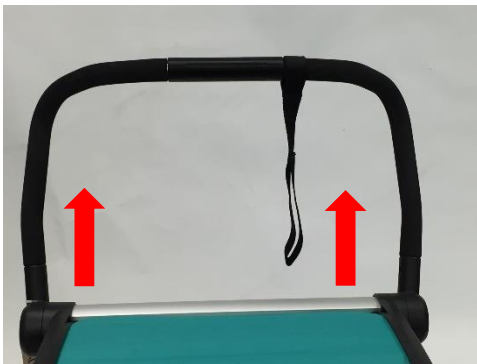


- 2) Remove the handle bar from the bracket**

Remove 2 screws from handlebar



Pull upward on the hand bar to remove



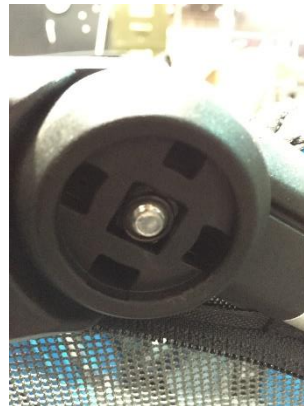
### 3) Removing the upper Brackets (Left Or Right)



**Use a flat screw driver to carefully remove the upper hinge cap**

### Top hinge cover

with a small flat screwdriver locate one of the tabs. Just above the weather cover slot. Carefully prying outward loosening the cap.



**Undo the Allen drive bolt located on the inside of the trailer  
The nut on the outside may fall out**



**Pull the bracket away from the upper frame**

# Thule Group»

DOCUMENT TITLE

DOCUMENT #:

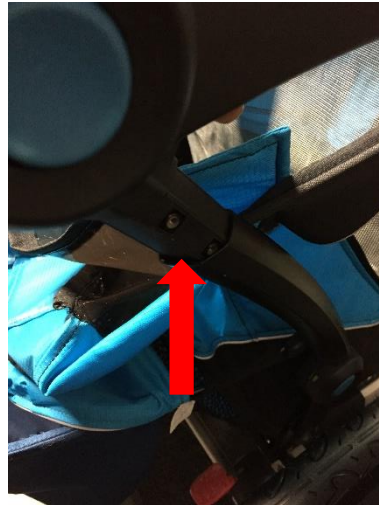
REVISION

RELEASED

Upper Bracket left and Right Lite Double trailer and  
Single

1

10/20/2016



**Slide the bracket out of the back frame**



**Installing the upper Bracket (left or right)**

- 1) Place the back portion of the bracket into the back frame (Making sure the nuts stay in place)  
Push all the way down**

# Thule Group»

DOCUMENT TITLE

DOCUMENT #:

REVISION

RELEASED

Upper Bracket left and Right Lite Double trailer and  
Single

1

10/20/2016



- 2) **Line the front of the bracket with the upper frame  
Install the bolt and tighten**



**Install the handle bar**

- 3) **Place in position and in screws**

# Thule Group»

DOCUMENT TITLE

DOCUMENT #:

REVISION

RELEASED

Upper Bracket left and Right Lite Double trailer and Single

1

10/20/2016



## Replace the hinge cap

- 1) Line the new cap up with the notches in the frame (cap cut-out facing down)
- 2) Push in until it clicks



## Re- Installing the body

Line the body up with the notch in the bottom of the bracket .

Then pull to install the body

Put the screw back in the body and then into the frame

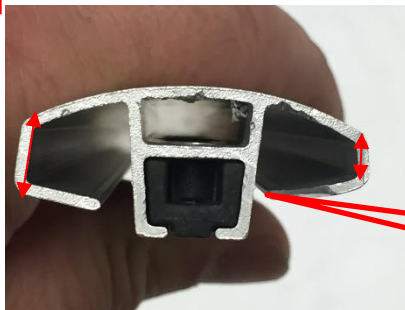


## Replacing the ACB

- 1) Determine what the “fat” edge is on the ACB replacment part  
That “fat” edge will face to the front of the trailer (You will see the diffrince)  
The infant sling loop will also be towards the front of the trailer

Determine what is the “THICK EDGE” of the ACB

The “thick” part will Face the front of the trailer



Seat webbing and tube will go through hear

- 2) Carefully install the wbbing and the piping into the second slot (at the back of the ACB)



# Thule Group»

DOCUMENT TITLE

DOCUMENT #:

REVISION

RELEASED

Upper Bracket left and Right Lite Double trailer and  
Single

1

10/20/2016



- 3) Place the handbar in forward position  
Partially collapse the trailer.  
Pull back back on the ACB and flip forward



- 4) Place ACB in place

Install the bolts on Both sides



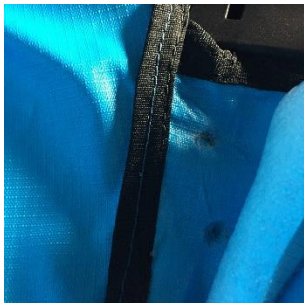
5) Install ACB covers and screws



### Install the the ACB Brackets

1) determine what bracket you are replacing  
install the bolts into the bracket

2) Locate the holes in the fabric



3) Push the Bolts through the fabric

4) Line up the bolts with the holes in the back frame  
Loosely Tighten the bolts

- 5) Now line up the top part of the bracket with the ACB  
Install the bolt and loosely tighten  
Install the second bolt and tighten
- 6) Now tighten all of the bolts



### Replace the Weather cover

- 1) Line up 1 of the top corners up with the channel in the side of the upper frame.  
Pull up a little



- 2) Do the same on the other side
- 3) Alternating from side to side pulling towards the back of the trailer until fully installed



- 4) Place the Mesh cover clips under the ACB  
The clips "clip" into the front channel.

## Replace the Mesh cover

- 5) Line up 1 of the top corners up with the channel in the side of the upper frame.  
Pull up a little



- 6) Do the same on the other side
- 7) Alternating from side to side pulling towards the back of the trailer until fully installed



- 8) Place the Mesh cover clips under the ACB  
The clips “clip” into the front channel.